

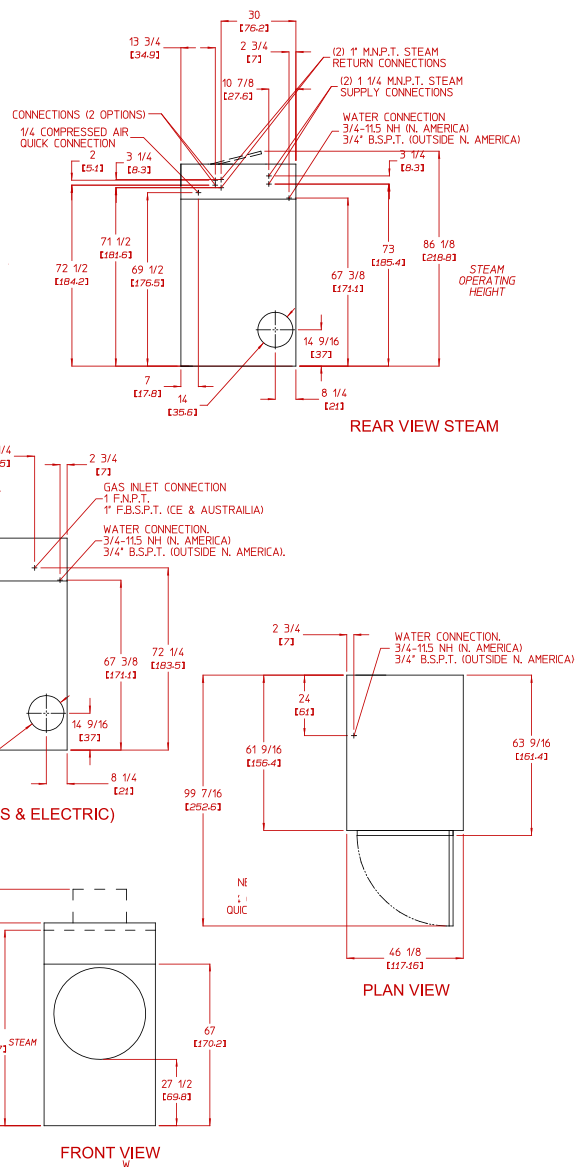
AD-115 Specifications

Tumbler Capacity (dry weight)	115 lbs. (52.16 kg)								
Tumbler Diameter	42 (106.68 cm)								
Tumbler Depth	41-1/4 (104.78 cm)								
Tumbler Volume	33.10 cu ft (937.29 L)								
Tumbler/Drive Motor	3/4 hp (0.56 kW)								
Blower/Fan Motor	3 hp (2.24 kW)								
Door Opening (Diameter)	31-3/8 (79.69 cm)								
Door Sill Height	27-1/2 (69.85 cm)								
S.A.F.E. Water Connection	3/4-11.5 NH (North America) 3/4 B.S.P.T. (Outside North America)								
Dryers per 20h/40h Container	4 / 8								
Dryers per 48h/53h Truck	9 / 10								
Width	46-1/8 (117.16 cm)								
Depth	63-9/16 (161.4 cm)								
Height (gas/steam/electric)	84 (213.4 cm) / 86-1/8 (218.8 cm) / 98 (248.9 cm)								
Airflow	60 Hz 2,100 cfm (59.47 cmm)								
gas/electric/steam	50 Hz 1,750 cfm (49.55 cmm)								
Exhaust Connection	14 (35.56 cm)								
Voltage Available	208-575v 3ø 3,4 w 50/60 Hz								
GAS MODEL:	Approx. Net Wt. 1,260 lbs (571.53 kg) Approx. Ship Wt. 1,400 lbs (635.03 kg) Heat Input 343,000 btu/hr (86,435 kcal/hr) Inlet Pipe Connection 1 F.N.P.T. 1 F.B.S.P.T. (CE and Australia Only)								
ELECTRICAL MODEL:	Approx. Net Wt. 1,260 lbs (571.53 kg) Approx. Ship Wt. 1,400 lbs (635.03 kg) Exhaust Connection (Diameter) 14 (35.56 cm) <table border="1" style="margin-top: 5px; width: 100%; border-collapse: collapse;"> <thead> <tr> <th colspan="2">Oven Size per pocket</th> </tr> <tr> <th>kW</th> <th>Btu/hr (kcal/hr)</th> </tr> </thead> <tbody> <tr> <td>60</td> <td>204,700 (51,600)</td> </tr> <tr> <td>72</td> <td>245,700 (61,900)</td> </tr> </tbody> </table>	Oven Size per pocket		kW	Btu/hr (kcal/hr)	60	204,700 (51,600)	72	245,700 (61,900)
Oven Size per pocket									
kW	Btu/hr (kcal/hr)								
60	204,700 (51,600)								
72	245,700 (61,900)								
STEAM MODEL:	Approx. Net Wt. 1,555 lbs (705.34 kg) Approx. Ship Wt. 1,695 lbs (768.84 kg) Steam Consumption 375 lb/hr (170.10 kg/hr) Operating Steam Pressure 125 psi max (8.62 bar) Exhaust Connection (Diameter) 14 (20.32 cm) Boiler Horsepower (Normal Load) 11 Bhp Compressed Air Volume 0.75 cfm (0.02 cmh)(2) Supply Connection 1-1/4 M.N.P.T. Return Connection (2) 1 M.N.P.T.								

Specifications in parentheses are metric equivalents.

9/14/10

Electrical Service Specifications					
GAS & STEAM					
SERVICE VOLTAGE	PHASE	WIRE SERVICE	APPROX AMP DRAW		CIRCUIT BREAKER
			60 Hz	50 Hz	
208	3ø	3	14.5	--	20
230	3ø	3	--	16.0	25
240	3ø	3	14.6	--	20
380	3ø	4*	--	8.7	15
400	3ø	4*	--	8.5	15
416	3ø	4*	--	9.0	15
460	3ø	3	7.8	--	15
480	3ø	3	7.8	--	15
575	3ø	3	5.8	--	15



Electrical Service Specifications

SERVICE VOLTAGE	PHASE	WIRE SERVICE	APPROX AMP DRAW		CIRCUIT BREAKER
			60 Hz	50 Hz	
60 kW Electric					
208	3ø	3	181	--	250
230	3ø	3	--	167	200
240	3ø	3	159	--	200
380	3ø	4*	--	100	125
400	3ø	4*	--	95	125
416	3ø	4*	--	92	125
460	3ø	3	83	--	125
480	3ø	3	80	--	100
575	3ø	3	66	--	100
72 kW Electric					
208	3ø	3	214	--	300
230	3ø	3	--	197	250
240	3ø	3	188	--	250
380	3ø	4*	--	118	150
400	3ø	4*	--	112	150
416	3ø	4*	--	109	150
460	3ø	3	98	--	125
480	3ø	3	94	--	125
575	3ø	3	78	--	100

40

88 Curren Road Fall River, MA 02720-4781 • 508.678.9000