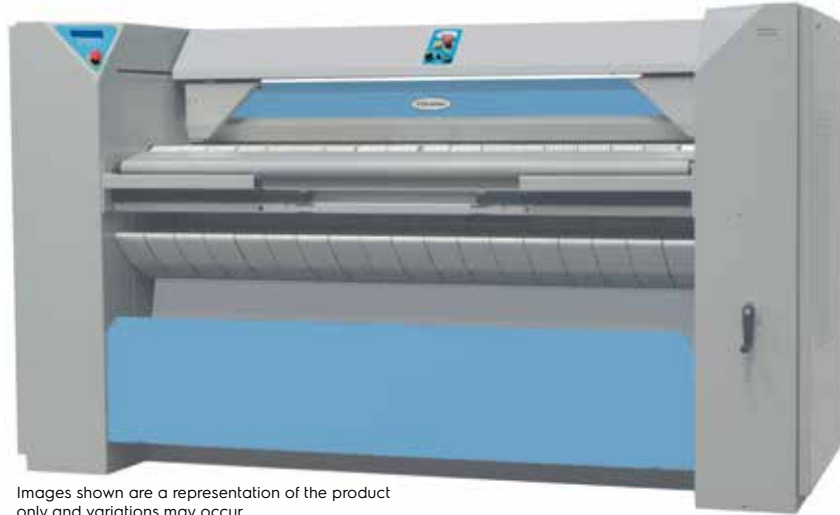


Industrial Ironers

IC44819, IC44821, IC44825, IC44828, IC44832 /F-R/FLF



Images shown are a representation of the product only and variations may occur.

Features and benefits

- Fully electric feeder requiring no compressed air – regular, silent and smooth work
- Electro-mechanical clamps, automatic linen detection, smooth closing and holding of the linen, smooth opening and feeding of item (compensation of the elasticity of the fibres)
- Easy-to-use electronic control panel, RABC (Risk Analysis and Biocontamination Control – EN 14065) compatible
- DIAMMS (Direct Ironer Advanced Moisture Management System); Automatic speed adjustment with moisture sensors to ensure a perfect result
- Spring loaded pressure roll ensures outstanding ironing quality
- Durable ironing belts made of Nomex® which can withstand temperatures above 220°C
- Fully encased machine for maximum workplace safety and energy saving
- Finger guard protection provides additional security for operators
- Nickel-plated cylinder prevents rust and improves lifetime
- **Maintenance free ceramic gas burner** minimizes downtimes. 20% more efficient than regular blue flame burners. A unique and patented burner by Electrolux
- Return feed, can be installed close to a wall for maximum space utilisation
- Labour saving automatic Feeding and Length-Folding device (FLF model)
- Automatic Feeding and Rear delivery (F-R model)
- Easy access to all parts for easy maintenance

Main options

- Multi-layer cylinder Dubixium™ for increased production on electric and gas heated machines
- CMIS (Certus Management Information System) connection for traceability according to European Standard EN14065

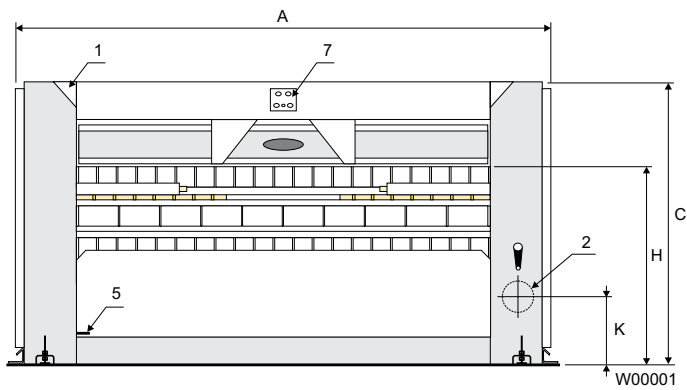
| Main specifications | | | IC44819 | IC44821 | IC44825 | IC44828 | IC44832 |
|--|--------------------------|------------|------------|------------|------------|------------|------------|
| Capacity*, | max. water evaporation** | l/h | 38/57/35 | 40/63/37 | 48/75/46 | 51/81/51 | 59/93/59 |
| Cylinder, | diameter (el, gas/steam) | mm | 479/457 | 479/457 | 479/457 | 479/457 | 479/457 |
| | length | mm | 1910 | 2120 | 2540 | 2750 | 3170 |
| Ironing speed | | m/min | 1.5-9 | 1.5-9 | 1.5-9 | 1.5-9 | 1.5-9 |
| Heating, | electricity | kW | 33 | 37 | 44 | 47 | 54 |
| | steam (900 kPa) | kg/h | 83 | 92 | 110 | 123 | 141 |
| | gas | Btu/h (kW) | 133100(39) | 150100(44) | 177400(52) | 191100(56) | 221800(65) |
| * 50% residual moisture content cotton 180g/m ² and 100% cylinder use (ISO 9398-1). | | | | | | | |
| ** El/steam/gas. | | | | | | | |

| Electrical connections* | | | IC44819 | IC44821 | IC44825 | IC44828 | IC44832 |
|---------------------------------------|-----------------------|-------------------|-----------|-----------|-----------|-----------|-----------|
| Heating Voltage | | | | | | | |
| EI | 400-415V 3AC 50/60 Hz | kW(A) | 35 (63) | 38 (63) | 45 (80) | 49 (80) | 56 (100) |
| Gas, steam | | | | | | | |
| | 400-415V 3AC 50/60 Hz | kW(A) | 2 (16) | 2 (16) | 2 (16) | 2 (16) | 2 (16) |
| Steam, gas and air connections | | | | | | | |
| Steam | | DN | 20 | 20 | 20 | 20 | 20 |
| Rec. steam pressure | | kPa | 900 | 900 | 900 | 900 | 900 |
| Condensate | | DN | 10 | 10 | 10 | 10 | 10 |
| Gas | | DN | 20 | 20 | 20 | 20 | 20 |
| Gas pressure, | | | | | | | |
| natural gas (G20/G25) | | Pa | 2000/2500 | 2000/2500 | 2000/2500 | 2000/2500 | 2000/2500 |
| propane (G31) | | Pa | 3700/5000 | 3700/5000 | 3700/5000 | 3700/5000 | 3700/5000 |
| Air outlet | | ø mm | 160 | 160 | 160 | 160 | 160 |
| Evacuated air, | | | | | | | |
| gas | | m ³ /h | 800 | 830 | 950 | 980 | 1010 |
| el, steam | | m ³ /h | 740 | 740 | 880 | 920 | 960 |
| Pressure drop | | max. Pa | 200 | 200 | 200 | 200 | 200 |
| Sound levels | | | | | | | |
| Airborne sound level | | | | | | | |
| | | dB(A) | 73 | 73 | 73 | 73 | 73 |
| Heat emission | | | | | | | |
| % of installed power, max. | | | 3 | 3 | 3 | 3 | 3 |
| Shipping data, (F-R model)** | | | | | | | |
| | | net, kg | 1170 | 1250 | 1330 | 1395 | 1465 |
| Shipping volume, F-R model | | | | | | | |
| | | m ³ | 5.8 | 6.2 | 7 | 7.4 | 8.2 |
| Dimensions in mm | | | | | | | |
| A | Width | | 2575 | 2785 | 3205 | 3415 | 3835 |
| B | Depth | | 1280 | 1280 | 1280 | 1280 | 1280 |
| C | Height | | 1460 | 1460 | 1460 | 1460 | 1460 |
| D | | | 1160 | 1160 | 1160 | 1160 | 1160 |
| E | F-R model only | | 670 | 670 | 670 | 670 | 670 |
| F | F-R model only | | 800 | 800 | 800 | 800 | 800 |
| G | F-R model only | | 840 | 840 | 840 | 840 | 840 |
| H | | | 1050 | 1050 | 1050 | 1050 | 1050 |
| I | | | 1910 | 2120 | 2540 | 2750 | 3170 |
| K | | | 355 | 355 | 355 | 355 | 355 |
| L | | | 190 | 190 | 190 | 190 | 190 |

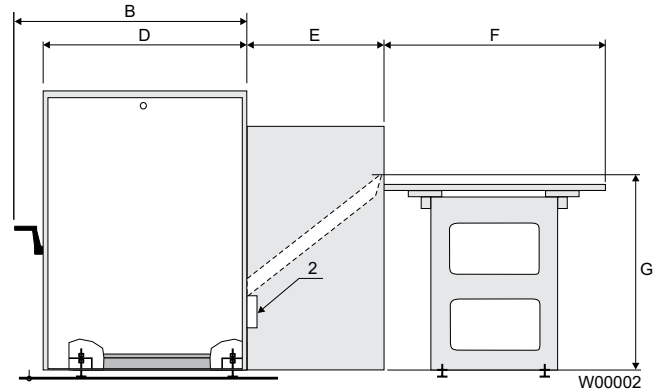
- 1 Control panel
- 2 Exhaust connection
- 3 Steam connection
- 4 Condensate connection
- 5 Electrical connection
- 6 Gas connection
- 7 Feeder control panel

* Other voltages available, see installation manual.

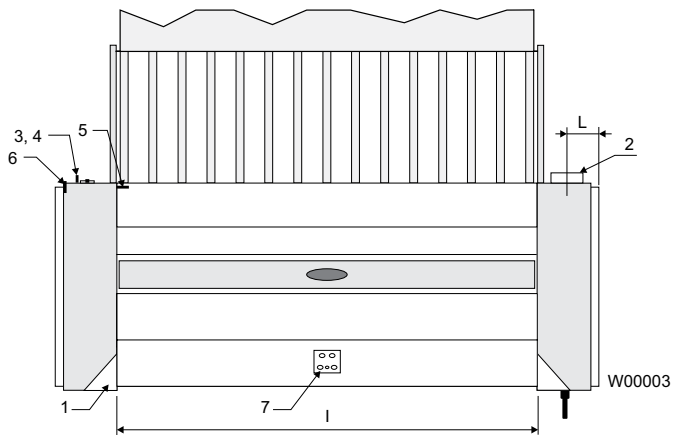
** Average data. Crated weight/shipping volume depends on configuration. Please contact logistics for exact measures.



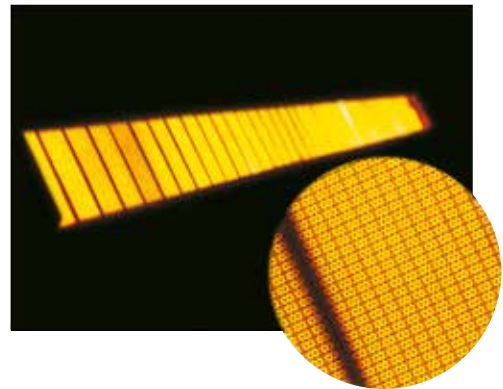
Front view



Right view



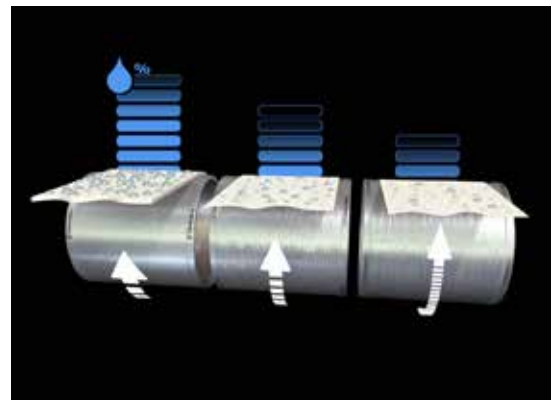
Top view



Maintenance free ceramic gas burner minimizes downtimes. 20% more efficient than regular blue flame burners. A unique and patented burner by Electrolux



Multi-layer thermal oil Dubixium™ cylinder guarantees smooth operation at all times thanks to zero overheating of sides.



Automatic ironing speed adjustment systems DIAMMS™ is based on real moisture of the items. Unique and patented.

